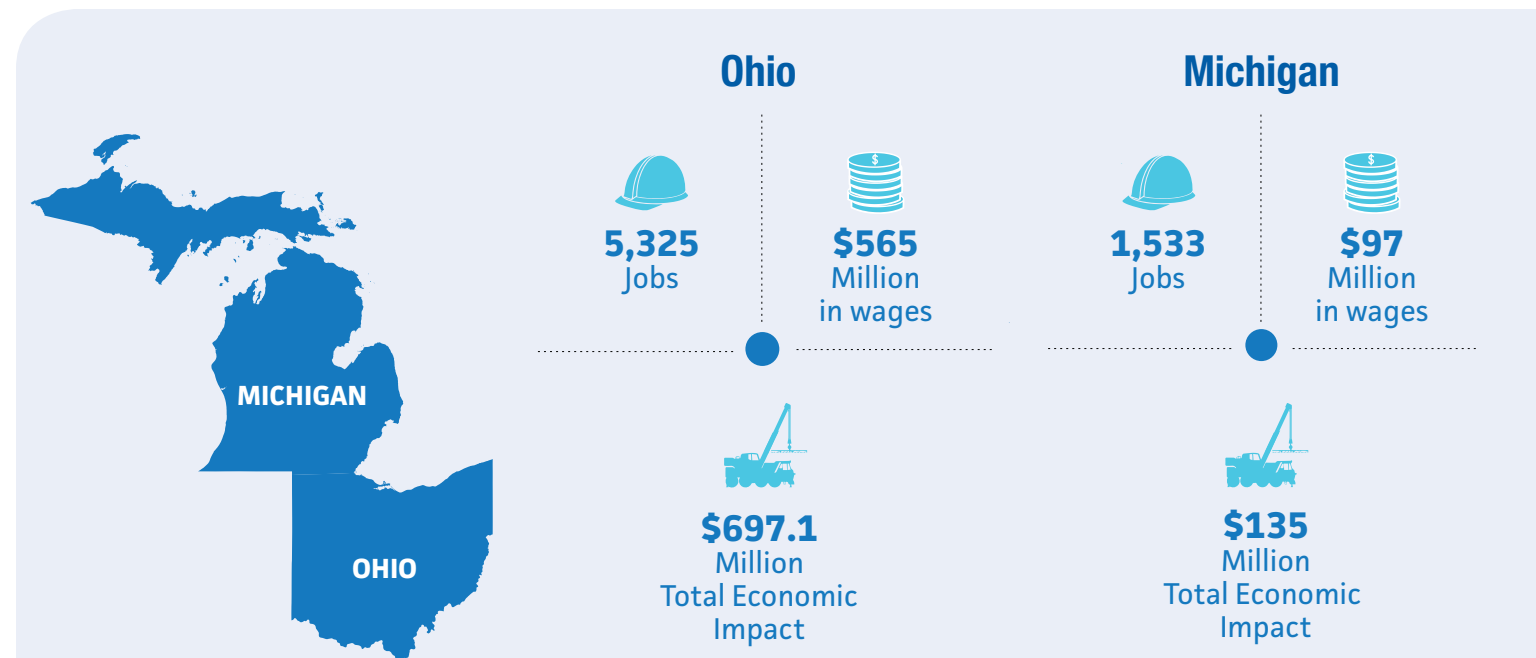
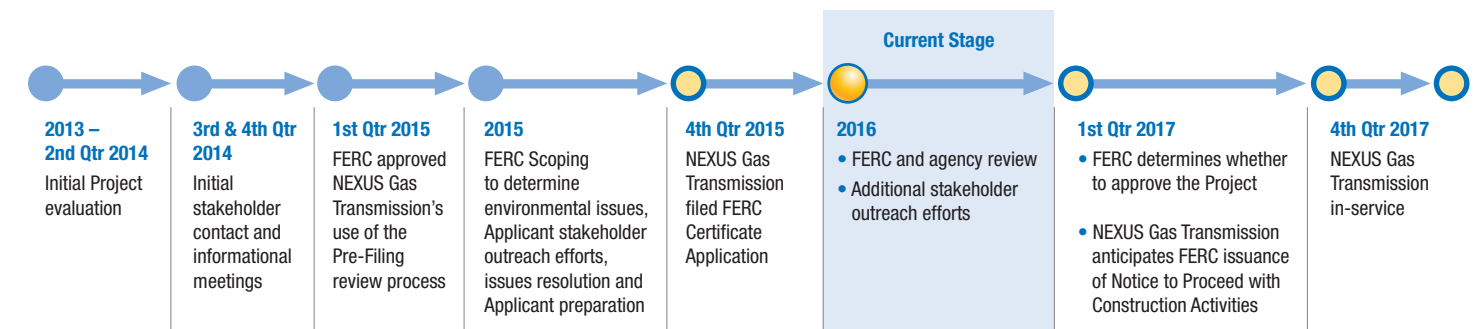
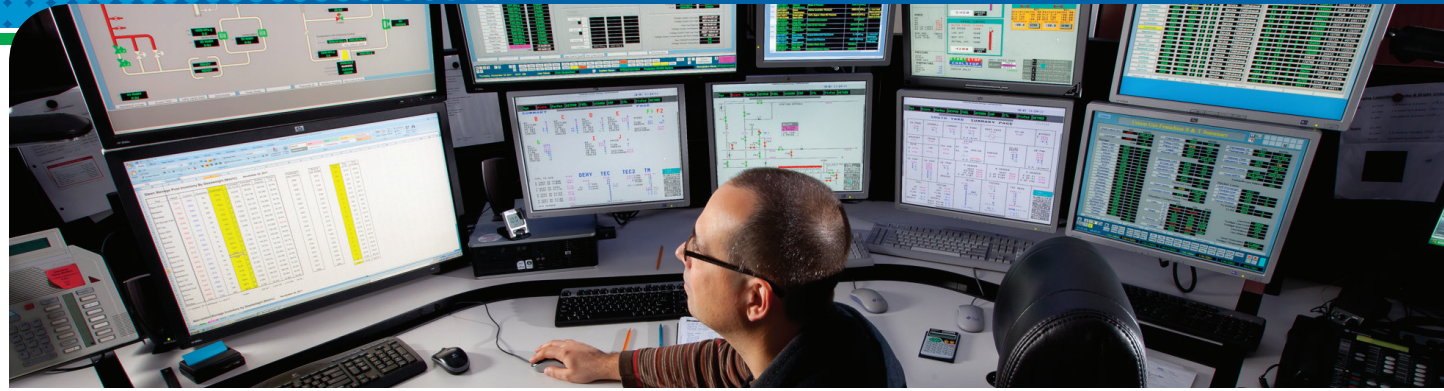


The NEXUS team is committed to providing landowners and interested citizens accurate and timely information about the proposed NEXUS Gas Transmission pipeline project. In addition to the many ways we already communicate with the public, we are launching a quarterly newsletter to help keep you informed. Through these newsletters, we look forward to providing information regarding the company's safety practices, the importance of energy infrastructure, the reason and need for the proposed project, and the processes in place governing easement acquisition, certification, construction, operation and maintenance of our facilities. We hope that you find the information helpful and share it with your friends and neighbors who may also be interested in this project.



Source: Economic & Policy Resources, Revised Economic Impact Analysis of the Spectra Energy NEXUS Pipeline Project, May 2015. Land Policy Institute and Center for Economic Analysis, Michigan State University. Economic Impacts of the NEXUS Gas Transmission Project in Michigan, April 2015.





Safety Above All Else

Safety is at the forefront of everything we do as a company. Our dedication to continuously improve our operational safety practices stems from our relentless focus on protecting the people within the communities where we operate, our employees and the environment. While we already have a strong safety record, our goal is zero incidents, as no incident is acceptable.

To ensure that our pipeline remains in safe and reliable operating condition, we employ a number of redundant, overlapping layers of protection – from high-tech monitoring at our gas control centers to routine foot patrols of the pipeline right-of-way. Visit our website to learn more about the human and technological

safeguards we employ to continuously protect public safety and ensure the long-term integrity of our pipeline. NEXUS is dedicated to the safe, reliable operation of its facilities, so the pipeline and associated aboveground facilities will be designed, constructed, maintained and operated to meet or exceed requirements set by the Pipeline and Hazardous Materials Safety Administration (PHMSA) of the U.S. Department of Transportation (USDOT). Once the NEXUS pipeline and related facilities are placed into service, NEXUS will monitor the pipeline 24 hours a day, 7 days a week, 365 days a year.



What Are Other People Saying About Pipeline Safety?

Interstate pipelines are the safest mode for transporting natural gas, but don't just take our word for it: According to PHMSA, the USDOT agency that oversees and regulates the design and operation of interstate facilities, "Pipelines enable the safe movement of extraordinary quantities of energy products to industry and consumers, literally fueling our economy and way of life. The nation's more than 2.6 million miles of pipelines safely deliver trillions of cubic feet of natural gas and hundreds of billions of ton/miles of liquid petroleum products each year. They are essential: the volumes of energy products they move are well beyond the capacity of other forms of transportation. Pipeline systems are the safest means to move these products."



Learn more about pipeline safety, visit us at www.nexusgastransmission.com/safety



Drain Tile Mitigation

Farming is a complex business, and NEXUS understands that even slight disturbances can have a significant impact on agricultural operations. We know that drain tiles, the system of pipes to help with drainage and water management on a piece of land, are critically important to farm productivity. We recognize the importance of this issue to farmers, and we are committed to working closely with landowners – from route selection to construction and restoration – to minimize any impact or disruption

to property and businesses. That is also why we sought feedback from the Ohio Farm Bureau and drain tile experts recommended by local landowners as we prepared the NEXUS Drain Tile Mitigation Plan. The plan was filed on November 20, 2015 with the Federal Energy Regulatory Commission (FERC), and copies of it are available on our website, on the FERC docket and at local libraries along the route. If you need help obtaining a copy of our Drain Tile Mitigation Plan, please call us at (844) 589-3655.

We understand that your family farm is as unique as a fingerprint. NEXUS will partner with farmers to identify the locations of existing drain tile, assist in developing plans for drainage systems and devise mitigation and repair strategies if necessary.

Maintaining Drain Tiles



NEXUS will review and analyze each agricultural parcel crossed by the project as part of the effort to evaluate potential impact on drain tile systems. Right-of-way (ROW) agents will serve as a resource for landowners through the construction and operation of the pipeline, and these agents will coordinate with drain tile inspectors and contractors to resolve any concerns from landowners. Any landowner with drain tile concerns will have a NEXUS ROW agent as their primary point of contact who will coordinate with appropriate drain tile inspectors and contractors to develop responses and solutions to address concerns. NEXUS intends to enlist available, qualified local drain

tile contractors with experience in Ohio and Michigan to consult on and/or conduct drain tile repairs or replacements if necessary. Drain tile restoration or repair work conducted by NEXUS will be monitored for three years, or until restoration is considered successful, to ensure the system functions properly. NEXUS will also assume responsibility for the costs associated with mitigating and repairing any impact to drain tile systems stemming from construction-related activities so that drainage systems are at least equivalent to their pre-construction condition.

To view the NEXUS Drain Tile Mitigation Plan (DTMP), visit us at www.nexusgastransmission.com/draintile